

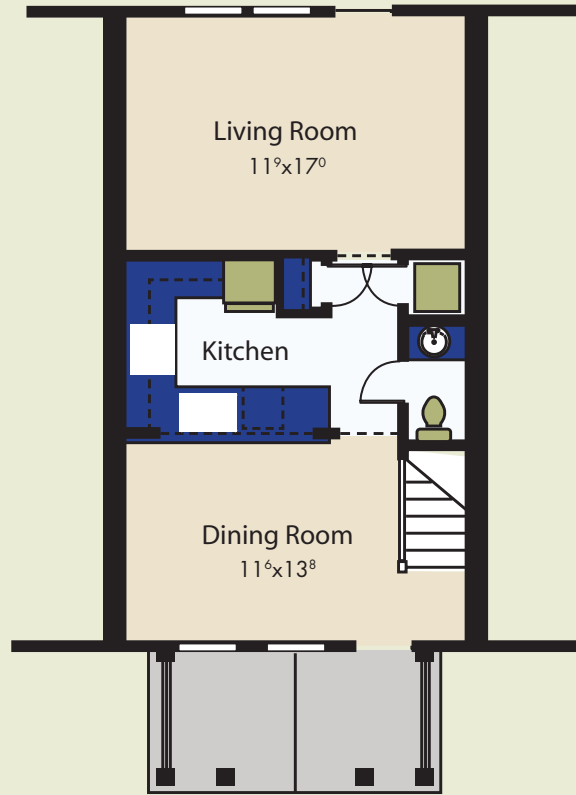


Church Hill Homes

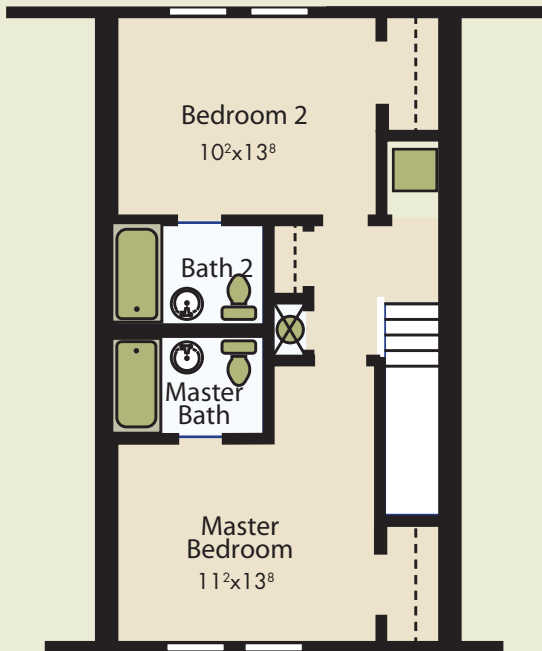
Integrity, Quality, Teamwork

the finley

*This plan features
2 bedrooms and
2 1/2 baths
in approximately
1206 sq ft.*



First Floor



Second Floor

STANDARD FEATURES:

- Hardiplank siding exteriors
- Nine foot ceilings first floor
- Covered porch entries
- 30 Year dimensional shingles
- Tilt sash vinyl windows with screens
- Shaker style trim package
- Aggregate concrete patios
- Birch kitchen cabinets
- Security system
- Kenmore kitchen appliance package

THE FINISH PACKAGES

(Upgrades for fixtures, flooring, counters, and appliances)

- The Alexandria Package
(Standard Package included in selling price.)
- The Covington Package
- The Montgomery Package

Please contact Church Hill Homes for more information on the finish packages and pricing.



Information deemed accurate but not guaranteed. Illustrations are artistic representations and not designed to convey specific detail.



WESTHALL

www.churchhillhomes.net